

Gundagai High School
Stage 4
Assessment Handbook
2023

Principal's message

Welcome to Year 7 and 8 students.

The following booklet contains all assessment information for Stage 4, 2023.

It is essential that students, parents and carers are familiar with the assessment procedures and requirements that are outlined in this handbook. Completion of all tasks is important if you are to work towards achieving your full potential this year.

This handbook will inform you clearly of assessment tasks that must be completed to show you have satisfied the requirements of all of your courses. You must also complete all course work to a satisfactory standard. Your classroom teachers, Stage Coordinator, as well as the executive team, are available to assist you if you have any questions or concerns. We will provide you with the necessary support if you are experiencing any problems that may affect your studies.

I would like to wish you the very best in 2023 and I hope that you thoroughly enjoy your studies this year.

Mr Simon Bridgeman
Principal

GUNDAGAI HIGH SCHOOL

STAGE 4 ASSESSMENT HANDBOOK 2023

CONTENTS

General policy information on assessment	Page 4
Responsibilities of the school, the faculties and students	Page 5
Illness/Misadventure appeals	Page 7
Application for illness/misadventure	Page 10
Assessment task scenarios	Page 11
Personal assessment calendar	Page 13
Examination procedures	Page 14

Stage 4 Subject Assessment Schedules

English	Page 17
Mathematics	Page 19
Science	Page 22
Geography	Page 26
History	Page 27
Personal Development, Health and Physical Education	Page 29
Technology Mandatory	Page 32
Music	Page 34
Visual Arts	Page 37

GENERAL POLICY INFORMATION ON ASSESSMENT

Students must apply themselves with diligence and sustained effort to the set tasks and experiences provided in the course by the school. Students must also maintain an ongoing regular attendance pattern in order to demonstrate their progress towards achieving course outcomes.

1. The school will decide the assessment tasks and marks to be awarded to each task. These tasks will then form the assessment program. The assessment program for each course full year course should include between 4-6 assessment tasks.
2. The course assessment schedule will be given to students at the start of the school year.
3. Students are to be informed of exact dates, at least two weeks in advance of assessment tasks. Where possible no more than two assessment tasks will be scheduled for any one day.
4. No individual assessment task should be greater than 40%, or less than 10% of the total value of the final assessment for a full year course unless prior approval has been sought from the Principal.
5. Any change in a subject assessment program should be carried out in consultation with the Year Adviser, the relevant Head Teacher and the Principal. Students will be given advance notice of any changes to the assessment program.
6. If a student fails to submit/attend an assessment task, one of the following courses of action will be undertaken:
 - a) The student may be granted an extension of time by the Head Teacher. An Illness/Misadventure form must be completed and submitted together with a medical certificate, in the case of illness or independent evidence, in the case of misadventure (refer to page 10 of this handbook).
 - b) If no extension of time is granted, the student will receive a score of zero. The student must still submit an outstanding assessment task. Although a score of zero will be recorded, the student will be deemed as having satisfactorily completed the task. The student and their parents/carers will be advised in writing whenever a zero is awarded for an assessment task.
 - c) An alternative, equal task may be set by the teacher if there is proven illness or misadventure. This must be approved by the Head Teacher and the Principal. This approval will be in writing.
 - d) In exceptional circumstances, the Principal may authorise the use of an estimate based on other appropriate evidence.
7. If a task does not allow the ranking of students to be effectively determined, additional task/s may be set with **two weeks'** notice being given to all students involved.
8. A number of tasks in various courses require students to cooperate with each other and it is a beneficial practice to discuss work set with other students. However, students are required to submit their own work for assessment. They are specifically warned against copying another's work, whether it be another student, published author or outside tutor. Any student found guilty of this offence may be penalised up to 100% of the mark available.
9. Students experiencing problems regarding assessment tasks should consult firstly with their class teacher. If the problem persists, or you feel that you have been unfairly treated, consult with the appropriate Head Teacher, then with your Year Adviser or Deputy Principal. If these members of staff are unable to resolve the difficulty, then the situation will be referred to the Principal to review the matter with all parties involved.

RESPONSIBILITIES

THE SCHOOL'S RESPONSIBILITIES

Gundagai High School is required to:

1. Provide an assessment of students' achievement in each of their Stage 4 courses.
2. Provide suitable reporting procedures.
3. Provide a review/appeals procedure for any student concerns that arise during the assessment program.
4. Give special consideration to students with a disability and others with special needs after consulting with the Principal, Wellbeing Coordinator, Special Education teacher and the Learning Support teacher

THE FACULTIES' RESPONSIBILITIES

Faculties at Gundagai High School are required to:

1. Determine the tasks on which subject assessments are based and the marks that will be allocated to each task.
2. Translate the components of each subject guide into student tasks and specify values to be applied to each task, consistent with those of the subject guides.
3. Schedule the assessment tasks throughout the course. The schedule for each subject is published in this handbook. Exact dates of tasks will be notified two weeks in advance, on the assessment task notification. No more than two assessment tasks should be scheduled for any one day.
4. Ensure there is a process in place for the collection of assessment tasks due to be submitted outside of class lessons.
5. Establish procedures for recording and reporting student performance on all assessment tasks. Records of all marks which form part of the assessment program are to be kept in duplicate and filed separately for security purposes.
6. Notify students and parent/carers of the award of a zero mark for any assessment task. This must be in writing.
7. Avoid changing the published assessment program after its commencement unless:
 - a) The relative value of the task is not altered
 - b) The component weightings are maintained
 - c) Students are informed in writing
 - d) The Principal, Deputy Principal and Head Teacher are informed.
8. Ensure learning activities and assessment tasks are differentiated to accommodate students with additional needs.
9. Establish review procedures if a student lodges an appeal within 24 hours of receiving the mark for an individual assessment task.

THE STUDENT'S RESPONSIBILITIES

1. Complete and present all assessment tasks.
2. If, for any reason, you cannot attend or submit a task it is up to you to inform your teacher and the Head Teacher of the Faculty concerned. You may, if you request it, be granted an extension or official leave (in such a case, an alternative date and/or task or estimate will be given). This will be granted **ONLY IN EXCEPTIONAL CIRCUMSTANCES**.
Refer to Section 6 of the General Policy Information on page 4.
3. If an extension of time or leave is not granted, penalties will be imposed. Refer to Section 6 of the General Policy Information on page 4.
4. It is your responsibility to check with the teachers of your course to see if any assessment tasks have been issued while you were absent from class. No extension or leave will be granted if you fail to carry out this action.
5. The work you submit must be your own. Any material copied without acknowledgment of the original source will be regarded as plagiarism and penalties will be imposed. Refer to Section 8 of the General Policy Information on page 4.
6. If you have any problems regarding assessment tasks you can approach your teacher, the Head Teacher of the faculty involved, or your Year Adviser for advice.
7. Appeals against marks awarded for an assessment task must be lodged within 24 hours of receiving the marked assessment task. Note 24 hours equals one school day.

ILLNESS / MISADVENTURE APPEALS

You may lodge an illness/misadventure appeal if you believe that circumstances occurring immediately prior to or during an assessment task, and which were beyond your control, affected your performance. The right to submit an illness/misadventure appeal and the responsibility for doing so rests with you, except where it is impossible for you to do so, such as in cases of severe illness.

A. Lodging an Appeal

All illness/misadventure appeals relating to assessment tasks are to be lodged to the Head Teacher of the faculty involved within 48 hours of the due date of the task. A copy of an illness/misadventure form is contained in this handbook. Forms are also available from Head Teachers.

Students lodging an appeal should carefully fill out the form. Teachers are available to provide support to students lodging an appeal. Completed forms are to be handed to the Head Teacher of the faculty concerned.

B. Grounds for Appeal

The assessment mark is intended to be a measure of your performance in the assessment. Therefore, appeals must relate to illness or misadventure suffered at the time of the assessment task that affected your performance in the task.

Appeals may be in respect of:

1. Illness or accident – i.e. illness or physical injuries suffered directly by you which affected your performance in the assessment task (e.g. influenza, an asthma attack, cut hand).
2. Misadventure – i.e. any other event beyond your control which affected your performance in the assessment task (e.g. the passing of a family member).

The Appeals process does not cover:

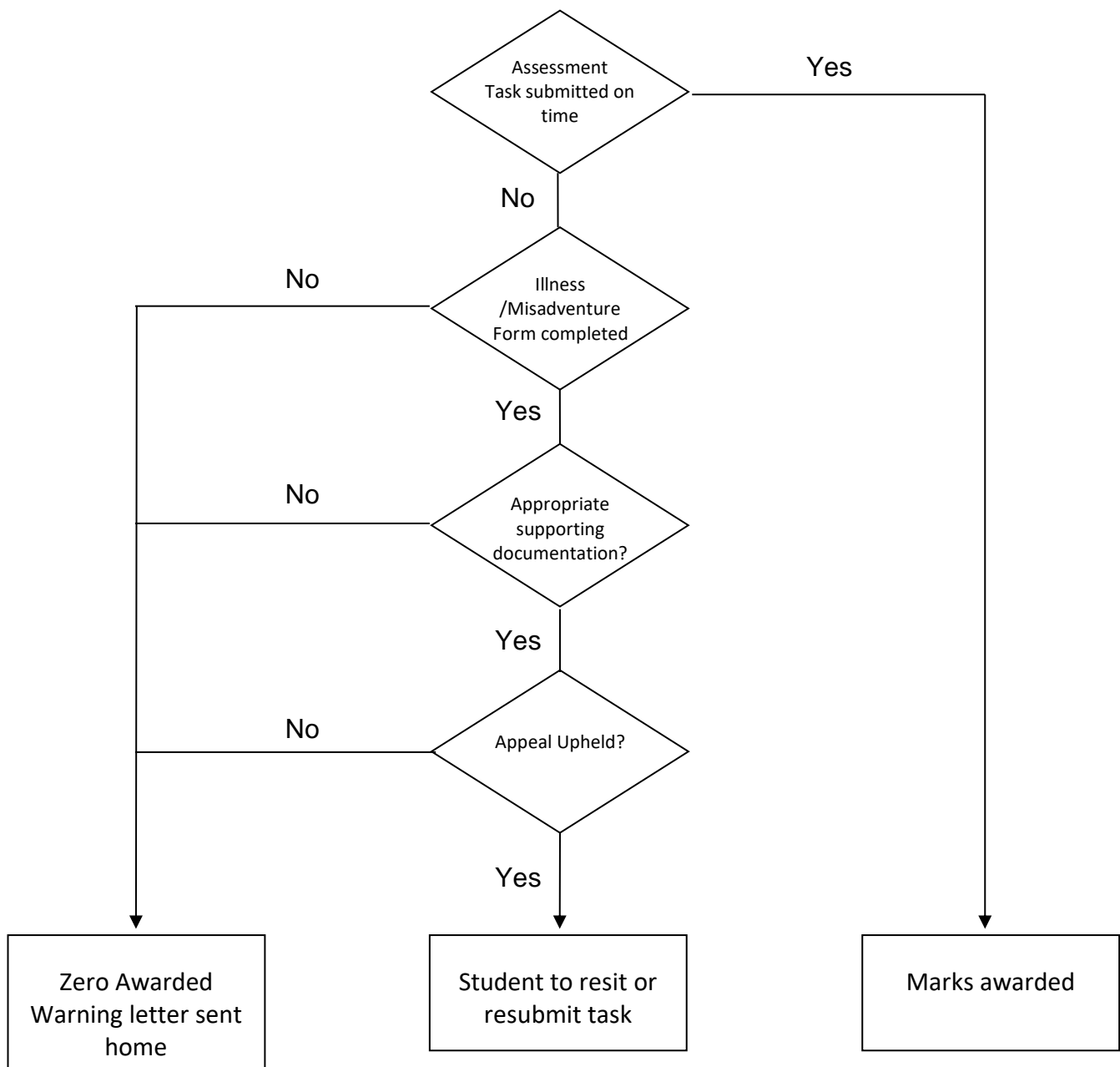
- Matters relating to long-term loss of preparation time, alleged inadequacies of teaching, loss of study time or facilities, computer technology failure.
- Matters that could have been avoided by the student (e.g. misreading of timetable).
- Long-term illness such as glandular fever, asthma and epilepsy.

C. Evidence

In all cases the school requires evidence that clearly identifies the disadvantage you experienced for the task. Your appeal must include:

- A statement explaining how you were affected during the assessment task;
- A medical certificate with details of the illness, together with a statement about how your performance in the assessment task may have been affected. In cases of misadventure, independent evidence from other sources (e.g. police statements and/or other statements explaining how your performance in the assessment task may have been affected) should be provided;
- A statement from your teacher. This should contain reference to your preparation for the assessment task and any other information deemed relevant to the genuineness of the appeal.

See flow diagram on next page for the appeals process:



D. Appeal Results

Illness/misadventure appeals will be considered by the Head Teacher. If the grounds for appeal are determined to be legitimate and the appeal includes required evidence, the Head Teacher will recommend that the appeal be upheld. The final decision on an appeal will be made by the Principal.

If the appeal is upheld, arrangements will be made for the student to resit or resubmit the assessment task. In some circumstances an estimate result may be awarded.

E. Appeals against Assessment Task Marks

You may appeal against the mark given in an assessment task if you feel it is not a true indication of its worth or if you consider incorrect procedure has been adopted.

Students may request reconsideration of the marks awarded for assessment tasks within 24 hours of the task being returned. The process of reconsideration will involve only the teacher concerned and the Head Teacher of the relevant Faculty.

STEPS IN APPEALING:

1. You should first of all discuss your appeal with the classroom teacher concerned, if your objection is to the mark obtained. If your objection is not resolved at this level then the matter should be referred to the Head Teacher of the faculty.
2. The Head Teacher of the faculty will advise if you have grounds for proceeding with the appeal. The matter will be discussed with the student, the class teacher and the Head Teacher. If the objection is not resolved at this level the matter will be referred to the Deputy Principal.
3. The Deputy Principal will determine by discussion with the student, classroom teacher and Head Teacher if the appeal should proceed. If not resolved at this level then it will be referred to the Principal.
4. The senior executive will determine the outcome of the appeal and the result communicated to the student, teacher and Head Teacher concerned.

MONITORING STUDENT PROGRESS

All N-determination warnings (non-completion of a course) will be recorded on a school database as part of the process for monitoring student progress. A student receiving N-determination warnings in a number of courses will be interviewed by the Deputy Principal. Parents will be notified of the situation.

The purpose of all interviews will be to provide support and encouragement in helping students to meet their responsibilities. A plan will be determined to help students correct the situation. Please note, that while you will be required to submit any missing assessment tasks, those tasks will not be included in your assessment mark.

Ultimately, it is the student's responsibility to ensure all requirements are being met for all courses. Please make every effort to ensure you achieve a successful record of study.

**GUNDAGAI HIGH SCHOOL
APPLICATION FOR SPECIAL CONSIDERATION FOR
ACCIDENT / MISADVENTURE / ILLNESS / SPECIAL CIRCUMSTANCES**



Student Name: _____ Class: _____

Subject / Course: _____ Task: _____

Due Date: _____ Date of actual submission: _____

Student Statement: (to be completed by the student)

My appeal is being lodged for the following reason(s):

- | | |
|---|--|
| <input type="checkbox"/> illness / misadventure | <input type="checkbox"/> final course rank |
| <input type="checkbox"/> the awarding of zero | <input type="checkbox"/> acceptable reason for late submission |
| <input type="checkbox"/> final assessment mark | <input type="checkbox"/> acceptable reason for non-submission |

I did not complete / submit the task indicated above on the due date for the following reason (s):

Signature of student: _____ Date: _____

Subject Teacher Statement:

Signature of subject teacher: _____ Date: _____

Attach supporting documentation (eg medical certificate) to this sheet and return it to the Head Teacher of the subject.

Head Teacher Recommendation:

Signature of HT: _____ Date: _____

Action Taken by the Deputy Principal and/or Principal*:

- | | |
|--|--|
| <input type="checkbox"/> non-attempt, zero awarded, U award | <input type="checkbox"/> late submission, zero awarded |
| <input type="checkbox"/> resit | <input type="checkbox"/> Estimate to be given* |
| <input type="checkbox"/> extension of time granted until _____ | |
| <input type="checkbox"/> other: _____ | |

Signature of Principal/DP: _____ Date: _____

GUNDAGAI HIGH SCHOOL - ASSESSMENT TASK SCENARIOS

Scenario	Action	Follow-Up
<p><i>You are absent on day a task is held due to illness e.g. examination, practical assessment, oral assessment</i></p>	<ul style="list-style-type: none"> • Parent or carer should phone or contact the school to notify the teacher/head teacher of the illness. <i>This must be done on the day of the task.</i> • To verify the seriousness of the illness, you will require a medical certificate. 	<ul style="list-style-type: none"> • Upon the first day of return to school you are to collect an Illness/Misadventure Appeal Form from the faculty Head Teacher. • Within 48 hours you will need to complete the Illness/Misadventure Appeal Form and submit it to the subject Head Teacher, with supporting evidence. • After the Head Teacher considers your appeal, you will be notified as to arrangements for the task.
<p><i>You are absent on day a task is to be submitted.</i></p>	<ul style="list-style-type: none"> • Parent or carer should phone or contact the school to make arrangements with the teacher/head teacher for submission of the task. <i>This must be done on the day of the task.</i> 	<ul style="list-style-type: none"> • The task needs to be delivered to the school on (or before) the due date.
<p><i>You become aware of an upcoming absence on the day of a scheduled task.</i></p>	<ul style="list-style-type: none"> • You are to notify class teacher as early as possible. • Written notification of an explanation for the absence including parent's signature is required. <i>Note: You should avoid medical appointments, driving tests, family holidays that conflict with published assessment items.</i> 	<ul style="list-style-type: none"> • Class teacher and Head Teacher will make suitable arrangements with you.
<p><i>You fail to submit an assessment task at the appropriate time.</i></p>	<ul style="list-style-type: none"> • Every assessment task is designed to assist your understanding of the course. It is important that you complete, to a satisfactory standard, all assessment tasks. 	<ul style="list-style-type: none"> • Class teacher will notify the Head Teacher. • N-determination warning letter will be sent to your parents along with notification of a ZERO score. • <i>You must still submit task.</i>
<p><i>You arrive at school and you become aware you have accidentally left your task or equipment required to complete a task at home.</i></p>	<ul style="list-style-type: none"> • You are to notify teacher/Head Teacher immediately. • Provision may be made for you to return home or parents/carers contacted. 	<ul style="list-style-type: none"> • If you follow all procedures promptly, no penalty will be incurred, as long as you return in time to complete the set task.

<i>Scenario</i>	<i>Action</i>	<i>Follow-Up</i>
<i>You experience technical difficulties in publication of task.</i>	<ul style="list-style-type: none"> • Always back up work in a second location. • Keep draft copies of <u>all</u> work. 	<ul style="list-style-type: none"> • No provision can be made for computer problems. • You submit hand written copy and any available draft copies.
<i>You are experiencing difficulty in completing a research task.</i>	<ul style="list-style-type: none"> • You must discuss any difficulties with your class teacher well before the due date. • Written application for extension may be made to the teacher/head teacher. The senior executive will consider this. • This must be submitted at least THREE days prior to due date. 	<ul style="list-style-type: none"> • You will be advised if you have been granted an extension. • If an extension is granted, you must submit the task by the new due date.
<i>You submit work which is not your own.</i>	<ul style="list-style-type: none"> • All materials used in research must be appropriately referenced. 	<ul style="list-style-type: none"> • Using the work of others and presenting it as your own is a serious offence. The consequence will be zero marks awarded for the task, N-determination warning letter and an interview.
<i>You complete a task of poor quality.</i>	<ul style="list-style-type: none"> • Every assessment task is designed to assist your understanding of the course. It is important that you complete, to a satisfactory standard, all assessment tasks. 	<ul style="list-style-type: none"> • Your teacher/Head Teacher will notify you and your parents/carers that a non-serious attempt was made for the task. • You will need to resubmit the task at an appropriate standard to satisfy NESAs requirements. The marks awarded from your initial submission will stand without alteration. • If you fail to resubmit, you will be issued with an N-determination warning letter.
<i>You are unprepared for an oral task presentation.</i>	<ul style="list-style-type: none"> • You must be prepared to present the task on the first day listed, regardless of your position in the published order. 	<ul style="list-style-type: none"> • If you are not prepared to deliver the task when called upon, a ZERO score will be awarded and you will be issued with an N-determination warning letter.
<i>You attend school on the day task is due but you go home sick prior to the lesson when the task is to be submitted.</i>	<ul style="list-style-type: none"> • It is your responsibility to submit the task to your teacher/Head Teacher prior to leaving school. 	<ul style="list-style-type: none"> • If you fail to submit the task on date due it will receive a ZERO score and you will be issued with an N-determination warning letter.

2023 PERSONAL ASSESSMENT CALENDAR

Week	Term 1	Term 2	Term 3	Term 4
1				
2				
3				
4				
5				
6				
7				
8				
9				
10				
11				



EXAMINATION PROCEDURES FOR STAGE 4 – STAGE 6 STUDENTS

Please read the following very carefully

Before the examination period

1. Read the examination timetable carefully. It is the student's responsibility to attend all examinations as per the timetable. No additional time will be permitted for late students unless there are extenuating circumstances (eg late bus).

Immediately prior to the start of the examination

2. Be outside the examination room at least 5 minutes before the time specified on the timetable which is the starting time of the examination.
3. **PROGRAMMABLE WATCHES, MOBILE PHONES AND ALL ELECTRONIC DEVICES ARE BANNED FROM THE EXAMINATION ROOM. IF ONE IS FOUND ON A STUDENT IT WILL BE CONFISCATED** and a report will be written on the incident which **could result in no marks being awarded** for the examination.
4. If a student wears a watch into the examination, it must be placed in clear view on the desk.
5. No student is to bring any bags, folders, written material or paper or liquid paper/white out into the examination room. All writing and drawing paper will be supplied by the school.
6. No food is permitted in the examination room, however, students may bring a bottle of water in a clear bottle into the examination room.
7. There will be no borrowing during the examination.
8. All students should bring at least two black writing pens, pencil, eraser, ruler, as well as subject specific needs such as calculators, drawing equipment etc.

Upon entering the examination room and during the examination

9. Do not talk once inside the examination room unless directed to by a supervising teacher.
10. Upon entering the examination room sit in the desk, row, or area indicated by the supervising teacher.
11. To seek assistance from the supervisor students must raise their hand. The supervisors will only assist in the following matters:
 - The wrong examination has been provided
 - Part of the examination is missing
 - Part of the examination has not been printed clearly (you are not sure that you can read it correctly)
 - You need more writing paper
 - You think there is an error in the paper and you wish it verified
 - You feel ill or wish to go to the toilet (students should attempt to ensure that they do not need to make this request as it does disrupt the concentration of most students in the examination room)
12. Read and follow the instructions on the examination paper carefully.
13. Write your name as indicated on the examination paper.
14. Any student who engages in disruptive behaviour, talks to or attempts to communicate with another student or is found to be cheating may be removed from the room and have their paper cancelled. A report will be written on the incident which **could result in no marks being awarded** for the examination.
15. **You will NOT be permitted to leave the examination room** before the completion of your examination without **written permission** from the Principal or Deputy Principal, so please do not ask.

At the conclusion of the examination

16. At the conclusion of your examination stop work when directed and listen carefully to and follow all instructions given as to how to hand in your paper and leave the room.

If you are absent for an examination

17. You will be required to supply a **Medical Certificate** or **Statutory Declaration** should you miss an examination. Please notify the Deputy Principal as soon as possible if you are unable to sit for an examination so that an alternate time and/or an examination task can be arranged. Failure to do so will seriously disadvantage a student as they may be required to complete such a task on the first day back at school.

If you have any questions, ask your Year Adviser or classroom teacher.

STAGE 4

SUBJECT

ASSESSMENT

SCHEDULES

STAGE 4 ENGLISH

ASSESSMENT SCHEDULE 2023

Topics:

1. Resilience
2. Facing Your Fears
3. Introduction to Shakespeare
4. Decisions, Actions and Consequences

Task No.	Type	Weighting	Outcomes	Date Due
1	Creative: Writing / Reflection	25%	EN4-1A, EN4-3B, EN4-5C, EN4-7D	Term 1, Week 8
2	Multimodal	35%	EN4-2A, EN4-4B, EN4-8D, EN4-9E	Term 2, Week 7
3	Examination	40%	EN4-3B, EN4-5C, EN4-6C, EN4-7D	Term 4, Week 5

Stage 4 Outcomes:

A student:

- EN4-1A responds to and composes texts for understanding, interpretation, critical analysis, imaginative expression and pleasure.
- EN4-2A effectively uses a widening range of processes, skills, strategies and knowledge for responding to and composing texts in different media and technologies.
- EN4-3B uses and describes language forms, features and structures of texts appropriate to a range of purposes, audiences and contexts.
- EN4-4B makes effective language choices to creatively shape meaning with accuracy, clarity and coherence.
- EN4-5C thinks imaginatively, creatively, interpretively and critically about information, ideas and arguments to respond to and compose texts.
- EN4-6C identifies and explains connections between and among texts.
- EN4-7D demonstrates understanding of how texts can express aspects of their broadening world and their relationships within it.
- EN4-8D identifies, considers and appreciates cultural expression in texts.
- EN4-9E uses, reflects on and assesses their individual and collaborative skills for learning.

SCOPE AND SEQUENCE 2023 - STAGE 4 ENGLISH

	Week 1	Week 2	Week 3	Week 4	Week 5	Week 6	Week 7	Week 8	Week 9	Week 10	Week 11
Term 1	Resilience – In this unit of work students develop an understanding of resilience and how individuals can develop it. Students assess the fictional novel Pavana and complete a creative writing task as the summative task.										
	EN4-1A, EN4-3B, EN4-5C, EN4-7D										
									Creative/ Reflective Writing 25%		

	Week 1	Week 2	Week 3	Week 4	Week 5	Week 6	Week 7	Week 8	Week 9	Week 10
Term 2	Facing your Fears – In this unit of work students explore gothic literature, mild horror and mystery by studying the language forms and features in a range of texts. The texts used in this unit are The Watertower, Cast Away, Frankenstein, WW1 journals/memoirs, The Raven, Jaws and Documentary – Jaws. Teachers can pick and choose from these texts depending on class needs.									
	EN4-2A, EN4-4B, EN4-8D, EN4-9E									
							Multimodal 35%			

	Week 1	Week 2	Week 3	Week 4	Week 5	Week 6	Week 7	Week 8	Week 9	Week 10
Term 3	Introduction to Shakespeare – Pearson 7/8 Chapter on introduction to Shakespeare and excerpts from Macbeth. This unit is designed for students to become familiar with Shakespearean language and verse writing									
	EN4-1A, EN4-2A, EN4-4B, EN4-7D									

	Week 1	Week 2	Week 3	Week 4	Week 5	Week 6	Week 7	Week 8	Week 9	Week 10	Week 11
Term 4	Decisions, Actions and Consequences - Hitler's Daughter and Boy in the Striped Pyjama's										
	EN4-3B, EN4-5C, EN4-6C, EN4-7D										
					Examination 40%						

STAGE 4 MATHEMATICS
ASSESSMENT SCHEDULE 2023

Mathematics in Years 7-10 provides students with knowledge, skills and understanding in Number and Algebra, Measurement and Geometry, and Statistics and Probability. It focuses on developing increasingly sophisticated and refined mathematical understanding, fluency, communication, logical reasoning, analytical thought and problem solving skills. Assessment tasks for mathematics will all be in-class tasks.

Semester 1

Topics:

1. Integers
2. Whole numbers
3. Angles
4. Geometry
5. Area and volume

Task Number	Due Date	Type	Syllabus Outcomes	Weighting
1	Week 9, Term 1	In-class task	MA4-1WM, MA4-2WM, MA4-4NA MA4-5NA	25%
2	Week 7, Term 2	In-class task	MA4-1WM, MA4-2WM, MA4-13MG, MA4-14MG, MA4-17MG, MA4- 18MG	25%

Semester 2

Topics:

1. Fractions and percentages
2. Algebraic expressions
3. Equations
4. Number plane
5. Linear equations

Task Number	Due Date	Type	Syllabus Outcomes	Weighting
1	Week 9, Term 3	In-class task	MA4-5NA, MA4-6NA, MA4-8NA, MA4-9NA	25%
2	Week 5, Term 4	In-class task	MA4-1WM, MA4-2WM, MA4-10NA, MA4-11NA, MA4-10NA, MA3-17MG	25%

Stage 4 Outcomes:

A student:

- MA4-1WM communicates and connects mathematical ideas using appropriate terminology, diagrams and symbols
- MA4-2WM applies appropriate mathematical techniques to solve problems
- MA4-3WM recognises and explains mathematical relationships using reasoning
- MA4-4NA compares, orders and calculates with integers, applying a range of strategies to aid computation
- MA4-5NA operates with fractions, decimals and percentages
- MA4-6NA solves financial problems involving purchasing goods
- MA4-7NA operates with ratios and rates, and explores their graphical representation
- MA4-8NA generalises number properties to operate with algebraic expressions
- MA4-9NA operates with positive-integer and zero indices of numerical bases
- MA4-10NA uses algebraic techniques to solve simple linear and quadratic equations
- MA4-11NA creates and displays number patterns and graphs and analyses linear relationships
- MA4-12MG calculates the perimeters of plane shapes and the circumferences of circles
- MA4-13MG uses formulas to calculate the areas of quadrilaterals and circles, and converts between units
- MA4-14MG uses formulas to calculate the volumes of prisms and cylinders
- MA4-15MG performs calculations of time that involve mixed units, and interprets time zones
- MA4-16MG applies Pythagoras' theorem to calculate side lengths in right-angled triangles, and solves related problems
- MA4-17MG classifies, describes and uses the properties of triangles and quadrilaterals
- MA4-18MG identifies and uses angle relationships, including those related to parallel lines
- MA4-19SP collects, represents and interprets single sets of data, using appropriate statistical displays
- MA4-20SP analyses single sets of data using measures of location, and range
- MA4-21SP represents probabilities of simple and compound events

SCOPE AND SEQUENCE 2023 - STAGE 4 MATHEMATICS

	Week 1	Week 2	Week 3	Week 4	Week 5	Week 6	Week 7	Week 8	Week 9	Week 10	Week 11
Term 1	Integers				Whole numbers			Decimals		Angles	
	MA4-1WM, MA4-4NA				MA4-1WM, MA4-2WM, MA4-4NA			MA4-1WM, MA4-5NA		MA4-1WM, MA4-3WM, MA4-18MG	
									Task 1 25%		

	Week 1	Week 2	Week 3	Week 4	Week 5	Week 6	Week 7	Week 8	Week 9	Week 10
Term 2	Angles		Geometry			Area and Volume			Fractions and percentages	
	MA4-1WM, MA4-3WM, MA4-18MG		MA4-3WM, MA4-2WM, MA4-17MG			MA4-1WM, MA4-2WM, MA4-13MG, MA4-14MG			MA4-1WM, MA4-5NA, MA4-6NA	
							Task 2 25%			

	Week 1	Week 2	Week 3	Week 4	Week 5	Week 6	Week 7	Week 8	Week 9	Week 10
Term 3	Fractions and percentages		Algebra part 1 (Algebraic expressions)				Algebra part 2 (Equations)			
	MA4-1WM, MA4-5NA, MA4-6NA		MA4-1WM, MA4-2WM, MA4-3WM, MA4-8NA, MA4-9NA				MA4-1WM, MA4-2WM, MA4-3WM, MA4-8NA, MA4-9NA, MA4-10NA			
									Task 3 25%	

	Week 1	Week 2	Week 3	Week 4	Week 5	Week 6	Week 7	Week 8	Week 9	Week 10	Week 11
Term 4	Number plane			Graphing linear equations				Lost time			
	MA4-3WM, MA3-17MG			MA4-1WM, MA4-2WM, MA4-11NA, MA4-10NA							
					Task 4 25%						

STAGE 4 SCIENCE

ASSESSMENT SEQUEDULE 2023

Semester 1

Topics

1. It's a chemical world
2. What is life?

Task Number	Due Date	Type	Syllabus Outcomes	Weighting
1	Term 1, Week 2 and 9	Pre and post topic test	SC4-16CW SC4-17CW SCLS-22CW SCLS-23CW SCLS-24WS	5%
2	Term 1 Week 8	Group Task - Conducting Investigations and Processing Data - 1st Hand Investigation and Scientific Report	SC4-16CW SC4-17CW SC4-6WS SC4-7WS SCLS-22CW SCLS-23CW SCLS-24WS SCLS-7WS SCLS-9WS	15%
3	Term 2 Week 5	Data presentation and recording	SC4 – 5WS SC4- 6WS SC4-9WS SCLS -5WS SCLS -6WS SCLS – 9WS	5%
4	Term 2 Week 6	Independent Task - Research and Communication - Living Things	SC4-14LW SC4-7WS SC4-9WS SCLS-17 LW SCLS-18 LW SCLS-7WS SCLS-9WS	20%
5	Term 2 Week 1 and 7	Pre and post topic test	SC4-14LW SCLS-17LW SCLS-18 LW	5%

Semester 2

Topics

1. Time detectives
2. Body bits

Task Number	Due Date	Type	Syllabus Outcomes	Weighting
6	Term 3 week 8	Independent Task - Planning Investigations, Processing and Analysing data - Geological History	SC4-12ES SC4-5WS SC4-7WS SCLS- 14ES SCLS -15ES SCLS-5WS SCLS-7WS	25%
7	Term 4 week 3	Yearly examination	SC4-12ES SC4-14LW SC4-15LW SC4-5WS SC4-7WS SCLS- 14ES SCLS -15ES SCLS – 19LW SCLS-5WS SCLS-7WS	20%
8	Term 4 week 4	Data presentation and recording	SC4 –5WS SC4- 6WS SC4-9WS SCLS- 5WS SCLS -6WS SCLS – 9WS	5%

Stage 4 Outcomes:

A student:

- SC4-1VA - appreciates the importance of science in their lives and the role of scientific inquiry in increasing understanding of the world around them
- SC4-2VA - shows a willingness to engage in finding solutions to science-related personal, social and global issues, including shaping sustainable futures
- SC4-3VA - demonstrates confidence in making reasoned, evidence-based decisions about the current and future use and influence of science and technology, including ethical considerations
- SC4-4WS - identifies questions and problems that can be tested or researched and makes predictions based on scientific knowledge
- SC4-5WS - collaboratively and individually produces a plan to investigate questions and problems
- SC4-6WS - follows a sequence of instructions to safely undertake a range of investigation types, collaboratively and individually
- SC4-7WS - processes and analyses data from a first-hand investigation and secondary sources to identify trends, patterns and relationships, and draw conclusions
- SC4-8WS - selects and uses appropriate strategies, understanding and skills to produce creative and plausible solutions to identified problems
- SC4-9WS - presents science ideas, findings and information to a given audience using appropriate scientific language, text types and representations
- SC4-10PW - describes the action of unbalanced forces in everyday situations
- SC4-11PW - discusses how scientific understanding and technological developments have contributed to finding solutions to problems involving energy transfers and transformations
- SC4-12ES - describes the dynamic nature of models, theories and laws in developing scientific understanding of the Earth and solar system
- SC4-13ES - explains how advances in scientific understanding of processes that occur within and on the Earth, influence the choices people make about resource use and management
- SC4-14LW - relates the structure and function of living things to their classification, survival and reproduction
- SC4-15LW - explains how new biological evidence changes people's understanding of the world
- SC4-16CW - describes the observed properties and behaviour of matter, using scientific models and theories about the motion and arrangement of particles
- SC4-17CW - explains how scientific understanding of, and discoveries about the properties of elements, compounds and mixtures relate to their uses in everyday life

SCOPE AND SEQUENCE 2023 - STAGE 4 SCIENCE

	Week 1	Week 2	Week 3	Week 4	Week 5	Week 6	Week 7	Week 8	Week 9	Week 10	Week 11
Term 1	Elements, compounds and mixtures, and Physical and chemical change (CW2, CW4)										
	K&U: SC4-16CW, SC4-17CW (LS: 22CW, SCLS-23CW, SCLS-24CW) WS: SC4-6WS, SC4-7WS (LS: SCLS-7WS, SCLS-9WS)										
	Task 1: Pre and Post Topic Test (5%) Task 2: Group Task: Conducting Investigations and Processing Data – 1st Hand Investigation and Scientific Report (15%)										

	Week 1	Week 2	Week 3	Week 4	Week 5	Week 6	Week 7	Week 8	Week 9	Week 10
Term 2	Cells and Classification (LW1, LW2)									
	K&U: SC4-14LW (LS: SCLS-17LW, SCLS-18LW) WS: SC4-7WS, SC4-9WS (LS: SCLS-7WS, SCLS-9WS)									
	Task 3: Data Recording and Presentation (5%) Task 4: Independent Task: Research and Communication – Independent Animal, Plant, Fungi or Bacteria Research Project (20%) Task 5: Pre and Post Topic Test (5%)									

	Week 1	Week 2	Week 3	Week 4	Week 5	Week 6	Week 7	Week 8	Week 9	Week 10
Term 3	Rocks and minerals and Earth in Space (ES1, ES2)									
	K&U: SC4-12ES (LS: SCLS-14ES, SCLS-15ES) WS: SC4-5WS, SC4-7WS (LS: SCLS-5WS, SCLS-7WS)									
	Task 6: Independent Task: Planning Investigations, Processing and Analysing Data – Geological History (25%)									

	Week 1	Week 2	Week 3	Week 4	Week 5	Week 6	Week 7	Week 8	Week 9	Week 10	Week 11
Term 4	Body systems and Growth and reproduction (LW3, LW4)										
	K&U: SC4-14LW, SC4-15LW (LS: SCLS-19LW) WS: SC4-8WS (LS: SCLS-8WS)										
	Task 7: Yearly Examination (20%) Task 8: Data Recording and Presentation (5%)										

STAGE 4 GEOGRAPHY

ASSESSMENT SCHEDULE 2023

Topics:

1. Water in the World
2. Place and liveability

Task.	Date Due	Type	Outcomes	Weighting
1	Week 7, Term 3	Geography Research	GE4-3, GE4-5, GE4-5 GE4-6	50%
2	Week 3, Term 4	Examination	GE4-2, GE4-3, GE4-4, GE4-7, GE4-8, GE4-9, GE4-10	50%

Stage 4 Outcomes

A student:

GE4-1 locates and describes the diverse features and characteristics of a range of places and environments

GE4-2 describes processes and influences that form and transform places and environments

GE4-3 explains how interactions and connections between people, places and environments result in change

GE4-4 examines perspectives of people and organisations on a range of geographical issues

GE4-5 discusses management of places and environments for their sustainability

GE4-6 explains differences in human wellbeing. Content mapped to this outcome - Place and Liveability

GE4-7 acquires and processes geographical information by selecting and using geographical tools for inquiry

GE4-8 communicates geographical information using a variety of strategies

STAGE 4 HISTORY

ASSESSMENT SCHEDULE 2023

Topics: The Ancient World to the Modern World

Depth Study 4: Overview: The Ancient to the Modern World. The Western and Islamic world. Topic: Medieval Europe

Depth Study 5: The Asia Pacific World. Topic: The Angkor/Khmer Empire

Depth Study 6: Expanding Contacts. Topic: The Black Death

Task No.	Date Due	Type	Outcomes	Weighting
1	Week 7, Term 1	Research	HT4-5, HT4-8, HT4-9, HT4-10	50%
2	Week 7, Term 2	End of Semester Exam	HT4-1, HT4-2, HT4-3, HT4-4, HT4-7	50%

Stage 4 Outcomes:

A student:

- HT4-1 describes the nature of history and archaeology and explains their contribution to an understanding of the past.
- HT4-2 describes major periods of historical time and sequences events, people and societies from the past.
- HT4-3 describes and assesses the motives and actions of past individuals and groups in the context of past societies.
- HT4-4 describes and explains the causes and effects of events and developments of past societies over time.
- HT4-5 identifies the meaning, purpose and context of historical sources.
- HT4-6 uses evidence from sources to support historical narratives and explanations.
- HT4-7 identifies and describes different contexts, perspectives and interpretations of the past.
- HT4-8 locates, selects and organises information from sources to develop an historical inquiry.
- HT4-9 uses a range of historical terms and concepts when communicating an understanding of the past.
- HT4-10 selects and uses appropriate oral, written, visual and digital forms to communicate about the past.

PERSONAL DEVELOPMENT, HEALTH & PHYSICAL EDUCATION

ASSESSMENT SCHEDULE 2023

Semester 1 Topics:

1. Changes in me
2. R U Ok?
3. In the running
4. Be smart, don't start
5. Court games

Task Number	Due Date	Type	Syllabus Outcomes	Weighting
1	Week 6 Term 1	Changes in me – health task	PD4-3, PD4-8, PD4-10	15%
2	Week 5 Term 2	R U OK – health task	PD4-1, PD4-2, PD4-4, PD4-5, PD4-3, PD4-8, PD4-10	15%
3	Week 8 Term 2	Practical movement skills and performance	PD4-4, PD4-5, PD4-11	20%

Semester 2 Topics

1. Be smart, don't start cont...
2. Managing safety and risk
3. Have a ball
4. Modified games

Task Number	Due Date	Type	Syllabus Outcomes	Weighting
4	Week 8 Term 3	Practical movement skills and performance	PD4-4, PD4-5, PD4-10, PD4-11	25%
5	Week 3 Term 4	Semester 2 examination	PD4-6, PD4-9, PD4-2, PD4-6, PD4-7, PD4-10	25%

Stage 4 Outcomes:

A student:

PD4-1 examines and evaluates strategies to manage current and future challenges

PD4-2 examines and demonstrates the role help-seeking strategies and behaviours play in supporting themselves and others

PD4-3 investigates effective strategies to promote inclusivity, equality and respectful relationships

PD4-4 refines, applies and transfers movement skills in a variety of dynamic physical activity contexts

PD4-5 transfers and adapts solutions to complex movement challenges

PD4-6 recognises how contextual factors influence attitudes and behaviours and proposes strategies to enhance health, safety, wellbeing and participation in physical activities

PD4-7 investigates health practices, behaviours and resources to promote health, safety, wellbeing and physically active communities

PD4-8 plans for and participates in activities that encourage health and a lifetime of physical activity

PD4-9 demonstrates self-management skills to effectively manage complex situations

PD4-10 applies and refines interpersonal skills to assist themselves and others to interact respectfully and promote inclusion in a variety of groups or contexts

PD4-11 demonstrates how movement skills and concepts can be adapted and transferred to enhance and perform movement sequences

**STAGE 4 TECHNOLOGY MANDATORY
ASSESSMENT SCHEDULE 2023**

	Task 1	Task 2	Task 3	Task 4
Name of task	Timber rotation	Metal rotation	Food and agriculture rotation	Digital technology rotation
Due date of task	Week 8 of rotation term	Week 8 of rotation term	Week 8 of rotation term	Term 4
Outcomes assessed in task	TE4-1DP, TE4-2DP, TE4-3DP, TE4-8EN, TE4-9MA	TE4-1DP, TE4-2DP, TE4-3DP, TE4-8EN, TE4-9MA	TE4-1DP, TE4-2DP, TE4-3DP, TE4-5AG, TE4-6FO	TE4-1DP, TE4-4DP, TE4-7DI, TE4-10TS
Weighting %	33	33	33	Outcomes only

Outcomes:

TE4-1DP designs, communicates and evaluates innovative ideas and creative solutions to authentic problems or opportunities

TE4-2DP plans and manages the production of designed solutions

TE4-3DP selects and safely applies a broad range of tools, materials and processes in the production of quality projects

TE4-4DP designs algorithms for digital solutions and implements them in a general-purpose programming language

TE4-5AG investigates how food and fibre are produced in managed environments

TE4-6FO explains how the characteristics and properties of food determine preparation techniques for healthy eating

TE4-7DI explains how data is represented in digital systems and transmitted in networks

TE4-8EN explains how force, motion and energy are used in engineered systems

TE4-9MA investigates how the characteristics and properties of tools, materials and processes affect their use in designed solutions

TE4-10TS explains how people in technology related professions contribute to society now and into the future

STAGE 4 MUSIC

ASSESSMENT SCHEDULE 2023

Component	Task 1	Task 2	Task 3	Task 4	Weighting
Timing	Term 1 - Week 9	Term 2 -Week 8	Term 3 -Week 5	Term 4 Week 3	
Outcomes	4.7, 4.8, 4.10	4.1, 4.2	4.3, 4.9	4.4, 4.5, 4.6	
Task	Aural & Notation Quiz	Solo Performance	Ensemble Performance	Composition Portfolio	
Performing		20	20		40
Composing				30	30
Listening	30				30
Total %	30	20	20	30	100

Outcomes:

A student:

- 4.1 performs in a range of musical styles demonstrating an understanding of musical concepts
- 4.2 performs music using different forms of notation and different types of technology across a broad range of musical styles
- 4.3 performs music demonstrating solo and/or ensemble awareness
- 4.4 demonstrates an understanding of musical concepts through exploring, experimenting, improvising, organising, arranging and composing
- 4.5 notates compositions using traditional and/or non-traditional notation
- 4.6 experiments with different forms of technology in the composition process
- 4.7 demonstrates an understanding of musical concepts through listening, observing, responding, discriminating, analysing, discussing and recording musical ideas
- 4.8 demonstrates an understanding of musical concepts through aural identification and discussion of the features of a range of repertoire
- 4.9 demonstrates musical literacy through the use of notation, terminology, and the reading and interpreting of scores used in the music selected for study
- 4.10 identifies the use of technology in the music selected for study, appropriate to the musical context
- 4.11 demonstrates an appreciation, tolerance and respect for the aesthetic value of music as an artform
- 4.12 demonstrates a developing confidence and willingness to engage in performing, composing and listening experiences

SCOPE AND SEQUENCE 2023 - STAGE 4 MUSIC

	Week 1	Week 2	Week 3	Week 4	Week 5	Week 6	Week 7	Week 8	Week 9	Week 10	Week 11
Term 1	Noiseworks						Orchestrated				
	4.7, 4.8, 4.10						4.7, 4.8, 4.10				
									Task 1 30%		

	Week 1	Week 2	Week 3	Week 4	Week 5	Week 6	Week 7	Week 8	Week 9	Week 10
Term 2	String 'em up					Pictures of Childhood				
	4.1, 4.2					4.1, 4.2				
								Task 2 20%		

	Week 1	Week 2	Week 3	Week 4	Week 5	Week 6	Week 7	Week 8	Week 9	Week 10
Term 3	School of Rock					Natural Soundscapes				
	4.3, 4.9					4.4, 4.5, 4.6				
					Task 3 20%					

	Week 1	Week 2	Week 3	Week 4	Week 5	Week 6	Week 7	Week 8	Week 9	Week 10	Week 11
Term 4	One-Hit-Wonder					Happy Holidays					
	4.4, 4.5, 4.6					4.1, 4.2, 4.3					
			Task 4 30%								

STAGE 4 VISUAL ARTS

ASSESSMENT SCHEDULE 2023

TOPIC	Task Number	TASK	WEIGHT	DUE DATE	OUTCOMES
Foundations of Drawing	1	Historical Study	15%	Term 1, Week 7	Critical and Historical Studies: 4.7, 4.9
	2	2D – drawing	15%	Term 1, Week 9	Artmaking: 4.1, 4.6
Fundamentals of Painting	3	Part A: Visual Arts Process Diary	5%	Term 2, Week 3	Critical and Historical Studies: 4.8, 4.10
		Part B: 2D – painting	15%	Term 2, Week 7	Artmaking: 4.2, 4.5
Exploring Printmaking	4	Artist/ Artwork Critical Analysis	15%	Term 3, Week 7	Critical and Historical Studies: 4.9, 4.10
	5	2D – print	15%	Term 3, Week 9	Artmaking: 4.3, 4.4
Investigating Sculpture	6	Part A: Visual Arts Process Diary	5%	Term 4, Week 3	Critical and Historical Studies: 4.7, 4.8
		Part B: 3D – sculpture	15%	Term 4, Week 7	Artmaking: 4.2, 4.6

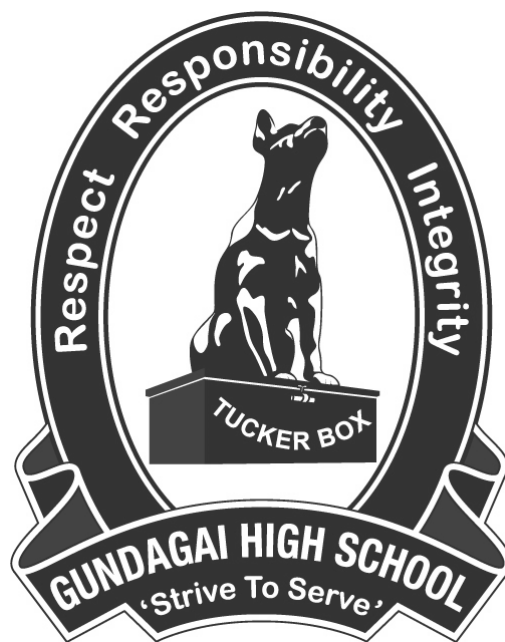
Stage 4 Outcomes:

- 4.1 uses a range of strategies to explore different art making conventions and procedures to make artworks
- 4.2 explores the function of and relationships between artist – artwork – world – audience
- 4.3 makes artworks that involve some understanding of the frames
- 4.4 recognises and uses aspects of the world as a source of ideas, concepts and subject matter in the visual arts
- 4.5 investigates ways to develop meaning in their artworks
- 4.6 selects different materials and techniques to make artworks
- 4.7 explores aspects of practice in critical and historical interpretations of art
- 4.8 explores the function of and relationships between the artist – artwork – world – audience
- 4.9 begins to acknowledge that art can be interpreted from different points of view
- 4.10 recognises that art criticism and art history construct meanings

SCOPE AND SEQUENCE 2023 - VISUAL ARTS

	Term 1				Term 2				Term 3				Term 4			
Topic	Foundations of Drawing				Fundamentals of Painting				Exploring Printmaking				Investigating Sculpture			
Task	1. Historical Study 2. 2D – Drawing				3. Part A: VAPD Part B: 2D – Painting				4. Artist/ Artwork Critical Analysis 5. 2D – Print				6. Part A: VAPD 7. Part B: 3D– Sculpture			
Frames	Subjective	Structural	Cultural	Postmodern	Subjective	Structural	Cultural	Postmodern	Subjective	Structural	Cultural	Postmodern	Subjective	Structural	Cultural	Postmodern
Conceptual Framework	Artist	Artwork	World	Audience	Artist	Artwork	World	Audience	Artist	Artwork	World	Audience	Artist	Artwork	World	Audience
Outcomes	Critical and Historical Studies: 4.7, 4.9 Artmaking: 4.1, 4.6				Critical and Historical Studies: 4.8, 4.10 Artmaking: 4.2, 4.5				Critical and Historical Studies: 4.9, 4.10 Artmaking: 4.3, 4.4				Critical and Historical Studies: 4.7, 4.8 Artmaking: 4.2, 4.6			
Components	Weighting %															
Artmaking /60%	15				15				15				15			
Critical and Historical Studies /40%	15				5				15				5			
Total % /100%	30				20				30				20			

This page is blank



Strive to Serve